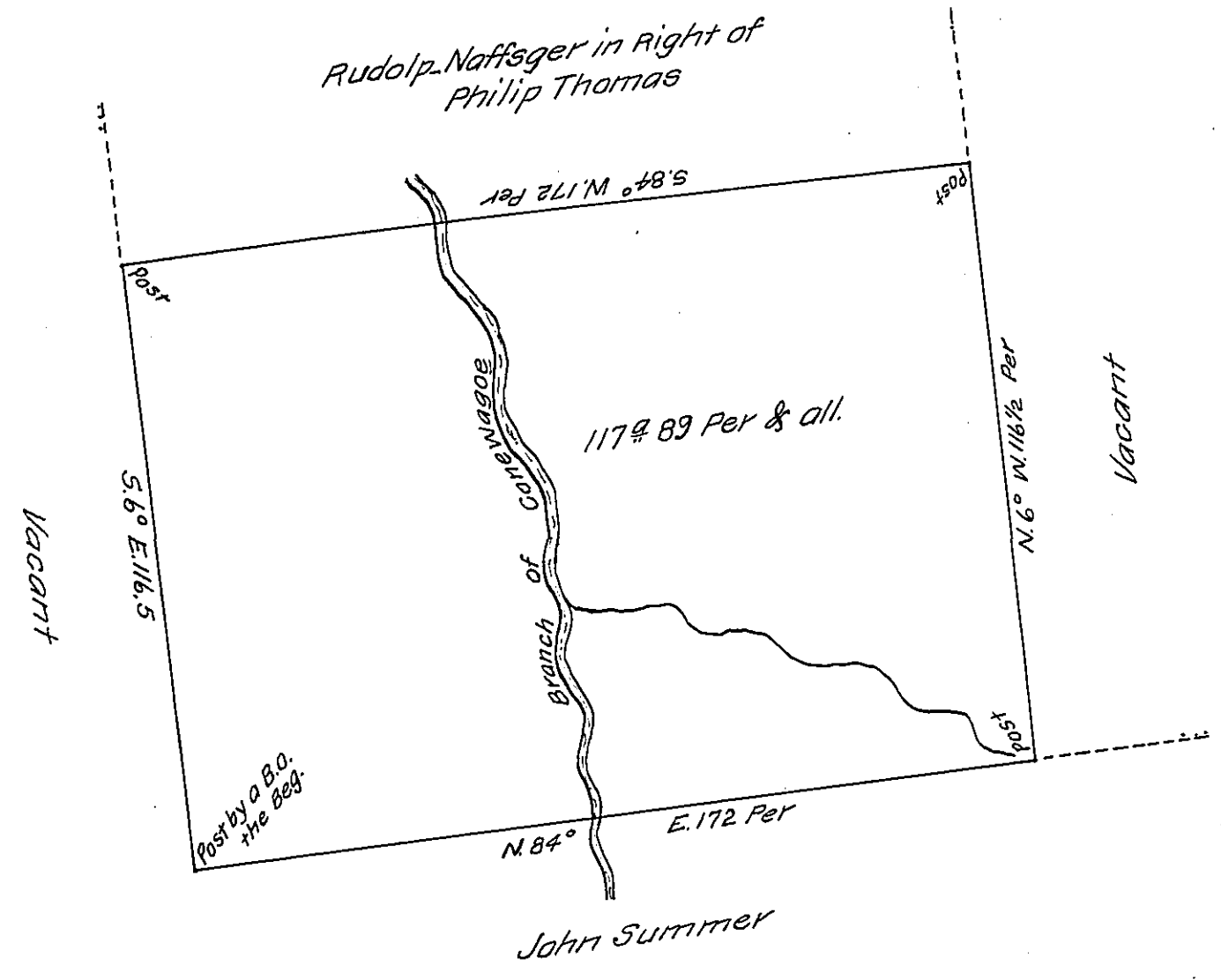


FORM No. 1.



A Draught of a Tract of Land situate partly in Manheim and partly in Germany Townships in the County of York Containing One Hundred and Seventeen Acres and Eighty-Nine Perches & the allowance of Six Acres & C<sup>t</sup> Surveyed to Rudolph Naffsger in pursuance of the Hon<sup>ble</sup> The Proprietaries Warrant bearing date the 30<sup>th</sup> Day of April 1765. The 8<sup>th</sup> of August 1765. By Arch<sup>d</sup> M<sup>c</sup> Clean, D. S.

To John Lukens, Esq<sup>t</sup> }  
 Surveyor General }

IN TESTIMONY that the above is a copy of the original remaining on file in the Department of Internal Affairs of Pennsylvania, made conformably to an Act of Assembly approved the 16th day of February 1833, I have hereunto set my hand and caused the Seal of said Department to be affixed at Harrisburg, this twelfth day of November, 1907.

*Henry Howell*  
 Secretary of Internal Affairs.